

OPEN MIND ART SPACE

Of Earth and Space

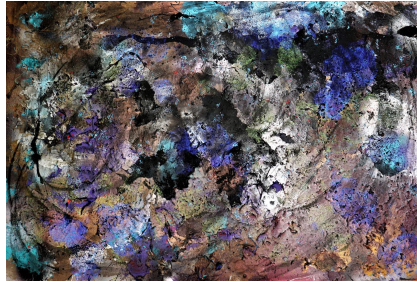
JULY 27 - AUGUST 23, 2019

OPENING RECEPTION:
SATURDAY, JULY 27, 7-10 PM

OPEN MIND ART SPACE

11631 SANTA MONICA BLVD.
LOS ANGELES, CA 90025

GALLERY HOURS: WED - SAT
11 AM - 6 PM
OR BY APPOINTMENT



Bianca Turner, *Cosmic Wind*, 2019, acrylic and oil spray torched on canvas, 23.5 x 36 inches

Beth Bowen, *Winter World*, 2019, acrylic and oil on canvas, 30 x 48 inches

(LOS ANGELES, CA) - **Open Mind Art Space** is pleased to present *Of Earth and Space*, a group exhibition featuring abstract paintings by Los Angeles artists Bianca Turner and Beth Bowen. A reception for the artists will be held on **Saturday, July 27th from 7:00 PM - 10:00 PM**. The exhibition will be on view from Saturday, July 27th through Friday, August 23rd, 2019.

Of Earth and Space is an exploration of earthly and other-worldly realms. Bianca Turner and Beth Bowen's abstract acrylic paintings combine materiality with movement and rigidity, imitating the organic elements of Earth and cosmic matter in outer space. Turner's works are microcosms of vibrant colors on canvas, incorporating glitter as an additional textural medium to represent her fantastical wonderment and curiosity about life on Earth and the vast universe beyond. Bowen utilizes gravity to allow paint to drip and slide across the surface of the canvas in various directions, and uses a deep blue color palette to depict the fluidity of water - the element from which everything on Earth began, and a symbol of birth and rebirth. The exhibition is unified by the artists' shared intention to embody the beauty and mystery of the Earth and space in their work.

Bianca Turner's paintings are deeply inspired by nature and its vivid colors and reflections of light. The shiny quality in her work created by mixing bright colored paint with glitter represents a fantasy world where her imagination and the elements of the universe intertwine. Turner sees art as "the definition of infinity" and her work explores the continuous transmutation of the evolving essence of life and nature. Visions and words turn into colors and textures to create new narratives in this dimension of infinity.

Turner is a self-taught artist from Romania. She graduated from the Academy of Economic Sciences in Bucharest, Romania and received the credentials for her PhD in economics from UCLA in 2004. Her paintings hang in private and corporate international collections, and Haegeumgang Museum in South Korea. Her work has been featured in British Vogue, London Lux and House of Coco. She received a Woman Art Award from MUSA International Art Space in Madrid, Spain in 2018. She currently lives with her husband in Los Angeles, California and works from her home studio.

Beth Bowen's abstract paintings are ephemerally organic and meditative, yet active with gestural expression. Using water-based acrylic paints as her preferred medium, she is able to manipulate its fluidity and allow each painting to take shape with rich colors ranging from navy blue to turquoise and gold to emulate water and earth. Her work is inspired by the serenity of nature and her personal reflections on daily life. Bowen says, "Art for me is my own micro universe - healing and relaxing."

Bowen is a self-taught artist, born and raised in Fresno, California. Shortly after graduating, she moved to Southern California in 1997 where she dove straight into various acting and modeling opportunities in television, film, commercials, and print campaigns. Best known as a cast member on Bravo TV's "There Goes the Motherhood," and now divorced, Beth is a single parent to four awesome kids. She and her family currently live in Palos Verdes, California.